



Description

The SFT-16F is an SG iron bodied ball float steam trap with integral automatic air venting facility and Flanged end connections. It is available with horizontal connections with flow from right to left or with vertical connections with flow downwards.

Fluids handled

Saturated steam  
Superheated steam  
Condensate

Sizes and connections

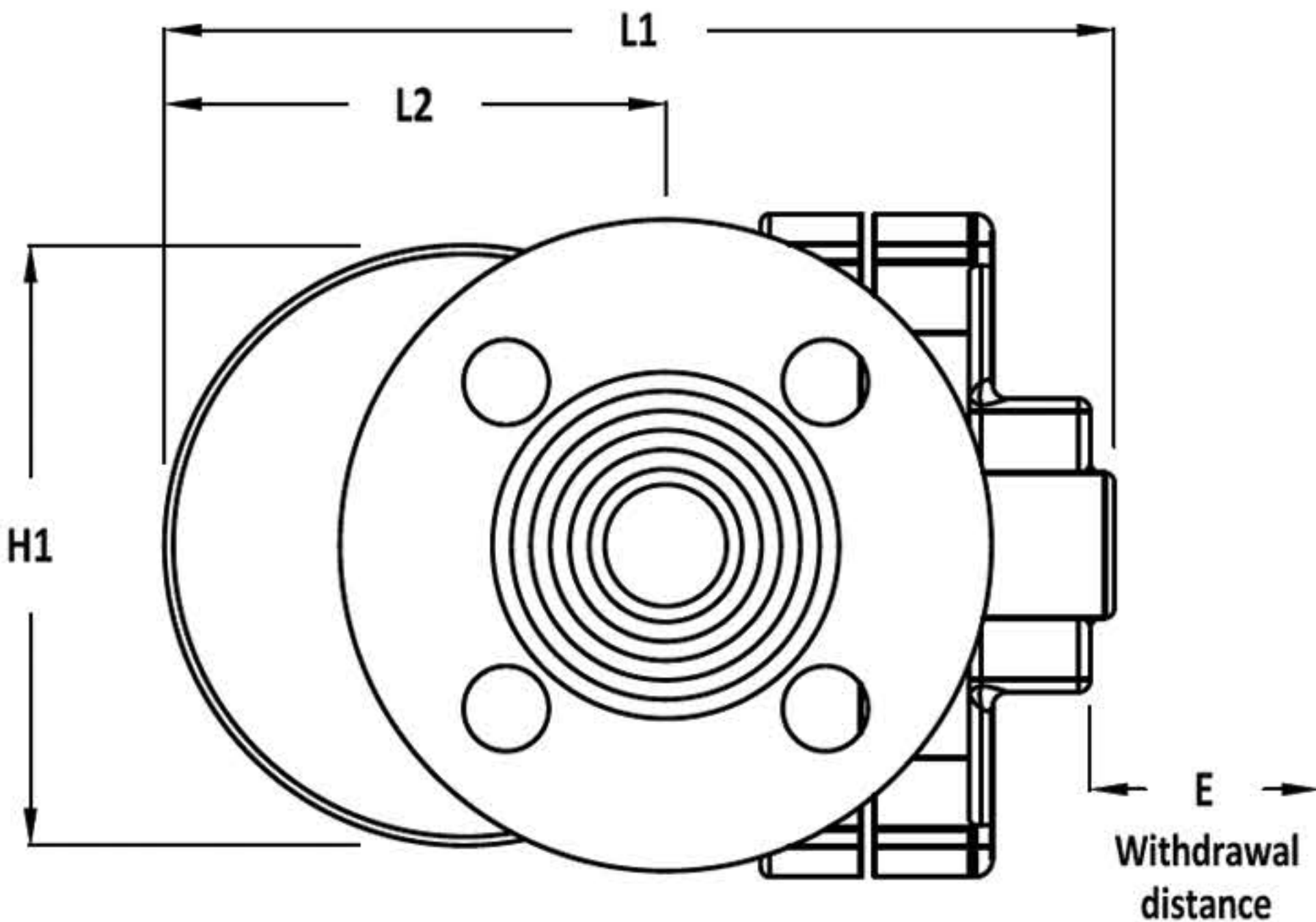
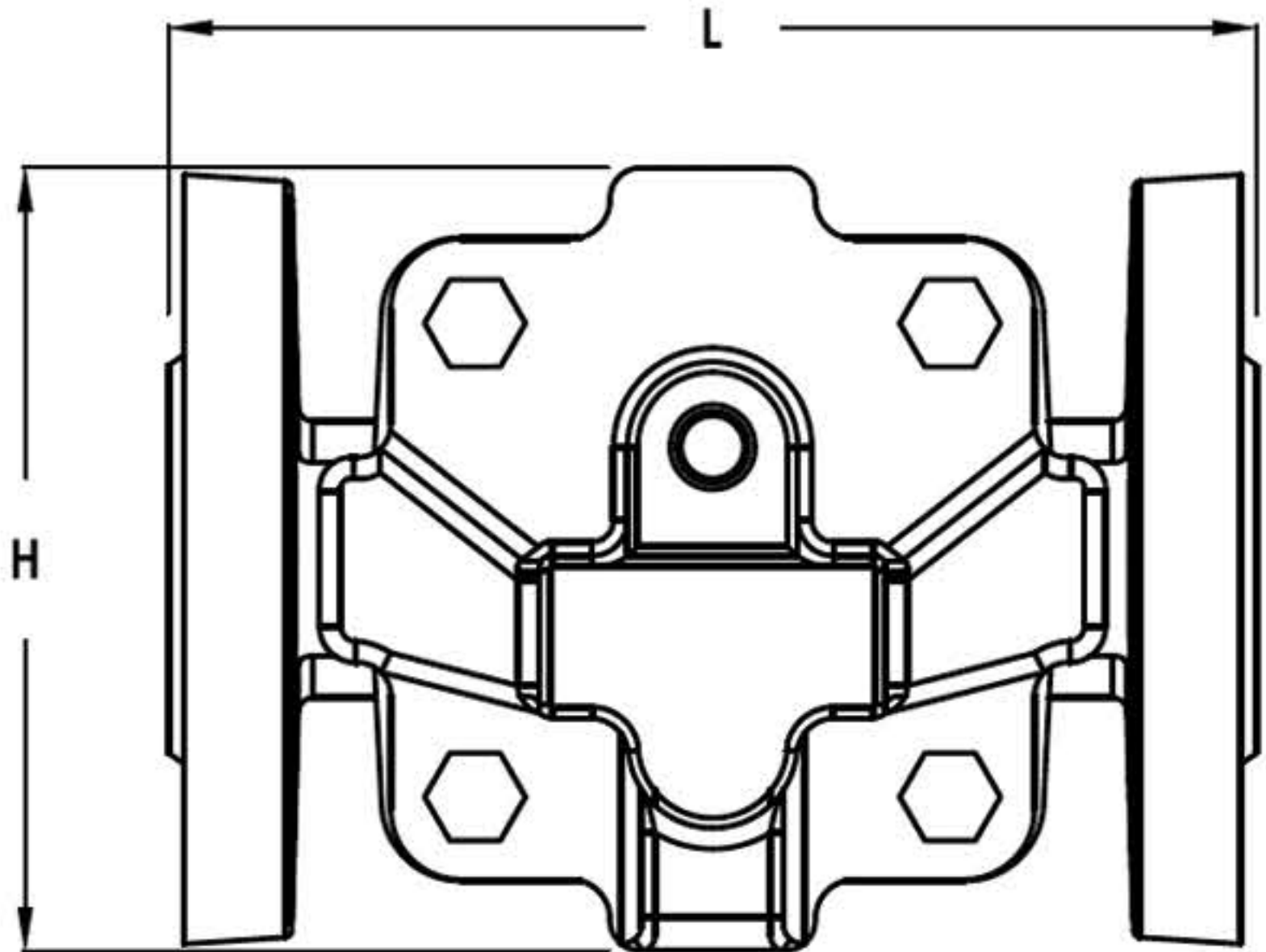
Flanged – PN16DN15 to DN25

Limiting Conditions

Body design conditions	PN16
Maximum allowable pressure (PMA)	16 bar g @ 100 °C
Maximum allowable temperature (TMA)	250 °C @ 13 bar g
Maximum operating pressure (PMO)	14 bar g
Maximum operating temperature (TMO)	250 °C
Maximum differential pressure (DPMX)	4.5 bar g 10 bar g
Cold hydraulic test pressure	24 bar g

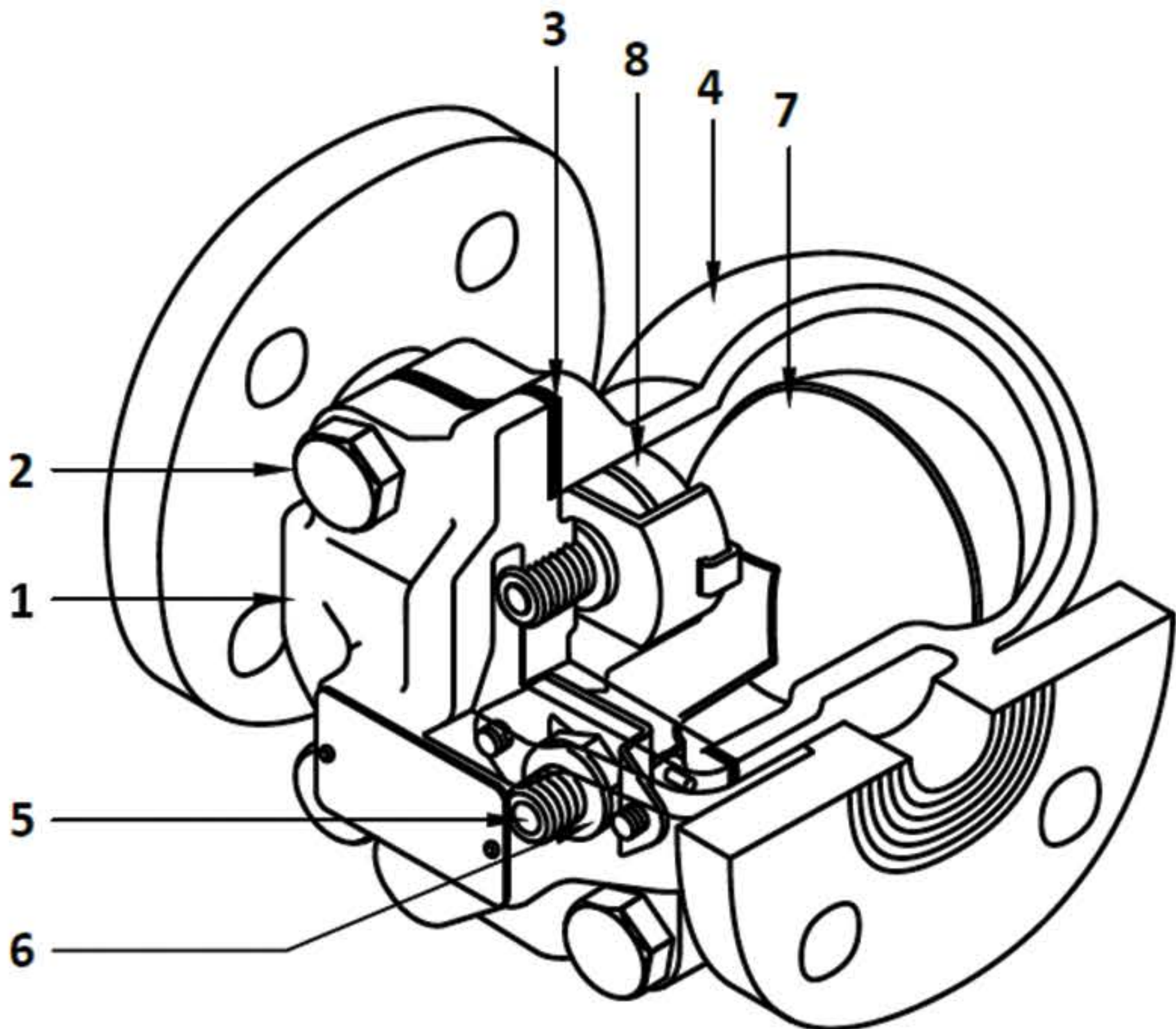
Dimensions and weights (mm and kg)

Size (DN).	L	L1	L2	H	H1	E	Weight
15	121	174	66	107	96	104	2.5
20	121	174	66	107	96	104	2.5
25	142	160	71	109	117	135	4



Materials

NO.	Part	Material	AISI
1	Cover	SG iron	GGG40
2	Cover bolts	Carbon Steel	Gr.8.8
3	Cover gasket	Exfoliated graphite	-
4	Body	SG iron	GGG40
5	Main valve seat	Stainless Steel	304
6	Main valve seat gasket	Exfoliated graphite	304
7	Ball float & lever	Stainless Steel	304
8	Air vent assembly	Stainless Steel	304

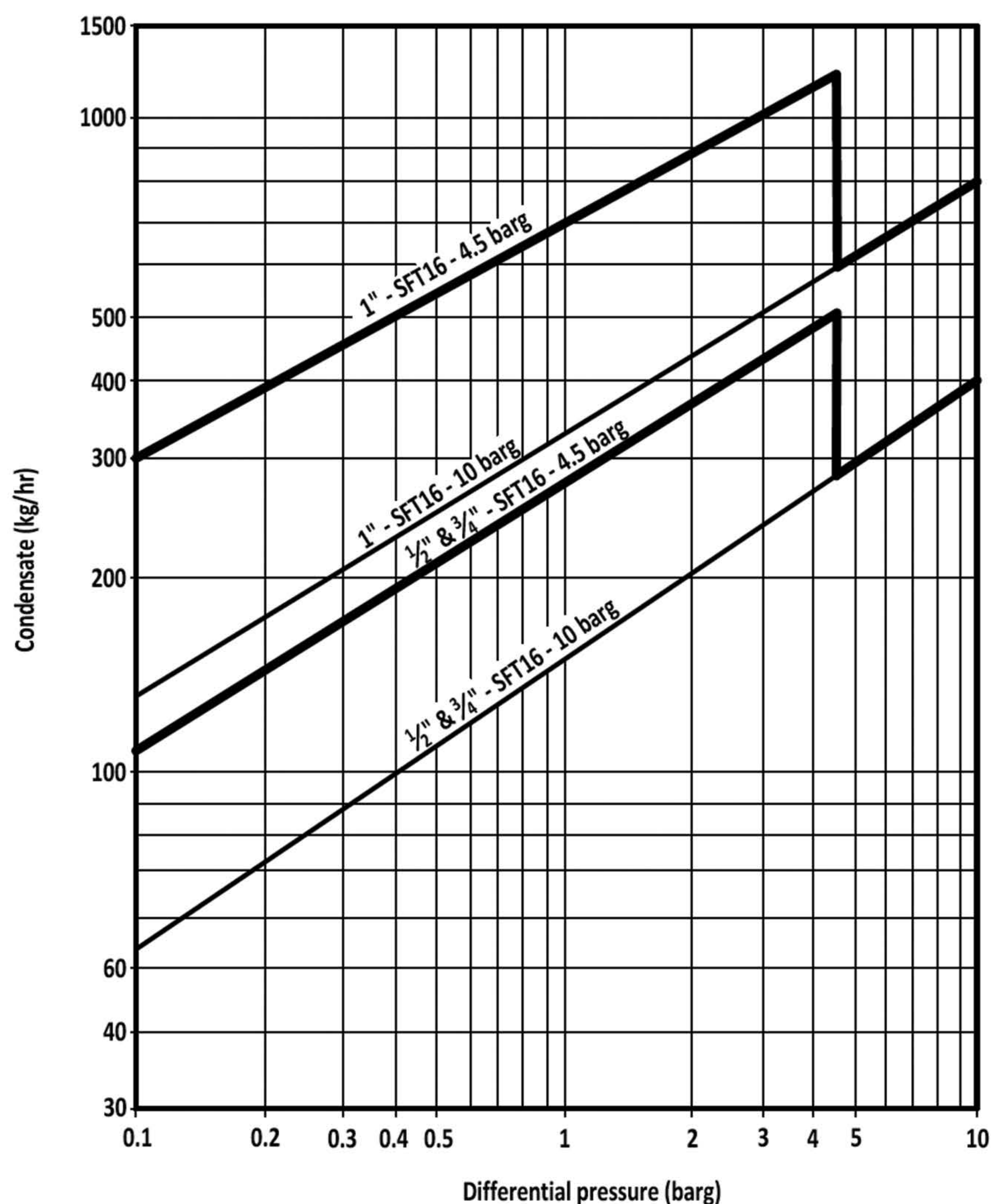


Spare Parts

Description	Part NO.
Main valve assembly kit	5,6
Ball Float assembly kit	7
Air vent assembly kit	8
Cover gasket assembly kit	3



## Steam Capacity Chart



## Safety information, installation and maintenance

The SFT-16F must be installed with the direction of flow as indicated on the body, and with the float arm in a horizontal plane, so that it rises and falls vertically. If required, the flow orientation can be changed on site.

For maintenance, consideration should be given to fitting isolation valves upstream and downstream of the steam trap.

## How to use the chart

Suppose that a trap for heat exchanger is required to discharge 500 kg/hr of condensate (considering proper coefficient factor), while differential pressure is 2 bar g. Find the point at which 500 kg/hr of condensate crosses the vertical 2 bar g differential pressure line. The first curve above the point deals with proper trap size.

\*For full details see the Installation and Maintenance Instructions, supplied with the product.