



Description

The SSEP25 is an SG iron baffle type separator used for the removal of entrained liquids in steam and compressed air & gas, so that they can be drained away as condensate.

Fluids handled

Saturated steam
 Compressed air
 Gas system

Sizes and connections

Flanged DN25 to DN125

Limiting Conditions

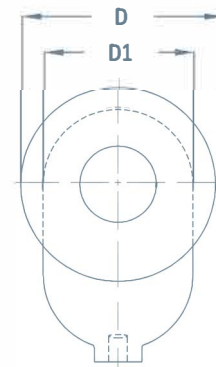
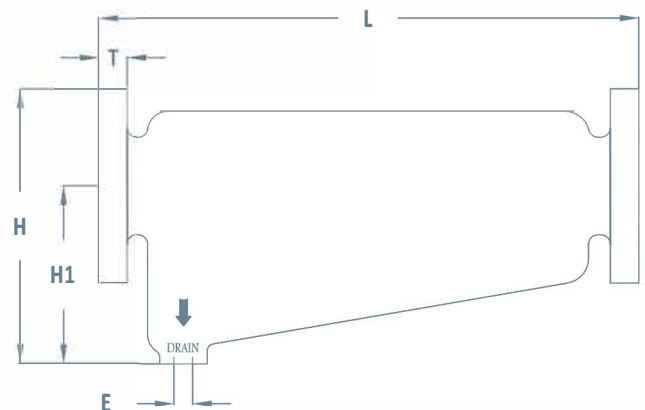
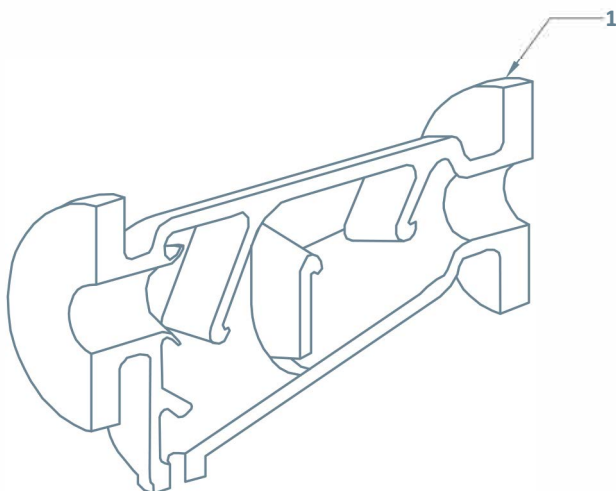
Body design conditions	PN25
Maximum allowable pressure (PMA)	25 bar g @ 100 °C
Maximum allowable temperature (TMA)	350 °C @ 14 bar g
Maximum operating pressure (PMO)	21.3 bar g
Maximum operating temperature (TMO)	350 °C
Cold hydraulic test pressure	38 bar g

Dimensions and weights (mm and kg)

Size (DN)	L	D	D1	H	H1	T	E	Weight
25	280	108	70	152	98	25.5	3/4"	11.5
40	368	127	89	174	111	15.9	3/4"	14.5
50	457	152	121	222	146	17.5	1"	26
80	483	190	152	270	175	19.1	1"	46
100	692	229	197	352	238	24	1"	77
125	705	254	354	360	233	25.5	1"	161

Materials

NO.	Part	Material
1	Body	SG Iron GGG-40



Safety information, installation and maintenance

Install in a horizontal pipeline with the drain directly below. To ensure that any separated liquid is drained away quickly, a suitable liquid drainer/steam trap must be connected to the drain connection 'E'.

*For full details see the Installation and Maintenance Instructions supplied with the product.