

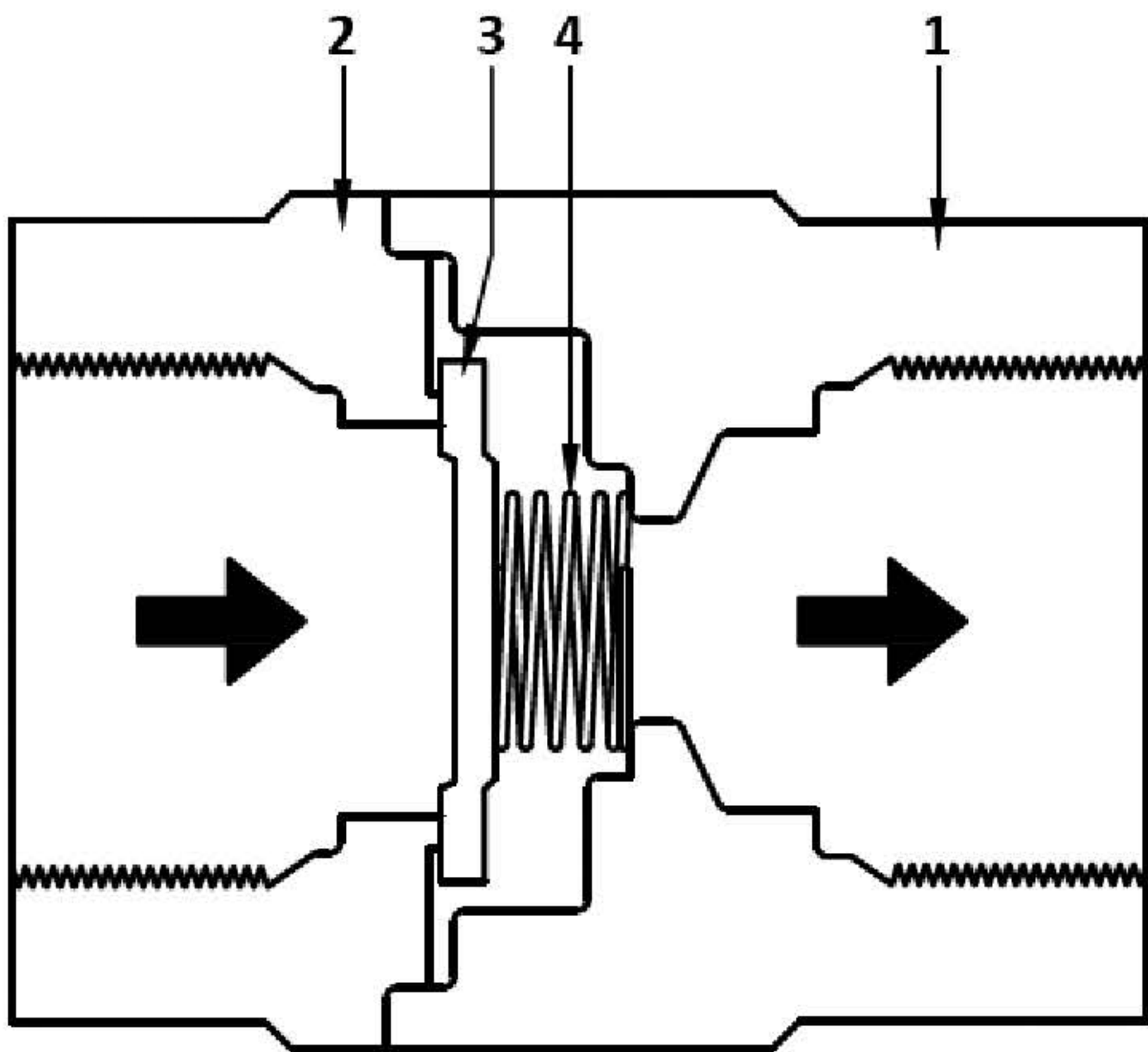


Limiting Conditions

Body design conditions	PN16
Maximum allowable pressure (PMA)	16 bar g @ 120 °C
Maximum allowable temperature (TMA)	180 °C @ 13 bar g
Maximum operating pressure (PMO)	13 bar g
Maximum operating temperature (TMO)	180 °C
Cold hydraulic test pressure	24 bar g

Materials

NO.	Part	Material	
1	Body	Stainless Steel	304
2	Cap	Stainless Steel	304
3	Disc	Stainless Steel	304
4	Spring	Stainless Steel	304



Description

The SCV16 is an in-line non-return valve with screwed ends manufactured from Stainless Steel. The design permits flow only in one direc-

Fluids handled

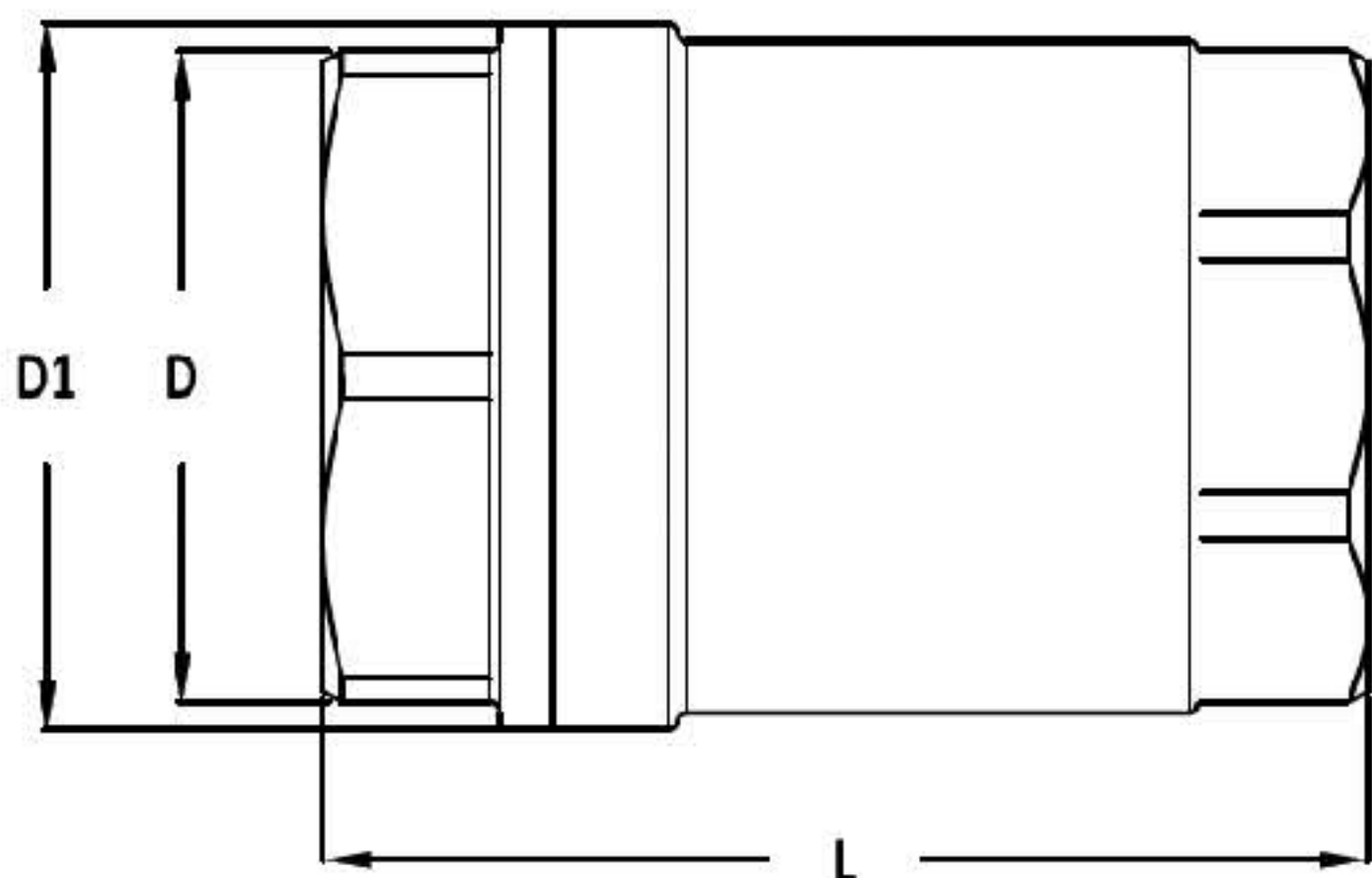
Saturated steam
Water Services
Thermal oil
Liquid & gaseous services

Sizes and connections

Screwed - BSP1/2" to 2"

Dimensions and weights (mm and kg)

Size (DN).	L	D1	D	Weight
15	59	36	24	0.20
20	66	40	30	0.25
25	78	47	37	0.40
32	76	57	45	0.45
40	102	69	52	0.80
50	118	80	64	1.20



Safety information, installation and maintenance

The flow direction must correspond to the flow direction arrow on the product. A minimum pressure is required for opening. If this minimum pressure is not reached, the closing spring can be dismantled. Valves without closing spring shall ONLY be installed in vertical pipes with upward flow.

*For full details see the Installation and Maintenance Instructions, supplied with the product.